

31/08/2022

Mr. Jose Luis Simoes
TSK Tanzania Company Limited

Dear Sir,

1. We wish to take this opportunity to introduce ourselves as a professionally managed, quality conscious organization engaged in the manufacture of machined and fabricated components and equipment for boilers, sugar plants, industrial furnaces, oil and gas sector, pollution control, cement plants, power plants, steel plants, mineral processing, ESP, cooling towers, fire-fighting projects ropeways and infrastructure. We also specialize in site fabrication and erection.
2. We have put up an automatic beam manufacturing line and can fabricate beams up to 3000 mm depth, with web thickness up to 63 mm and flange thickness up to 80 mm.
3. We have also put up a CNC Machine shop comprising of 7 axis CNC floor boring machine, a CNC Plano miller and a conventional VTL.
4. We can undertake a wide range of jobs, including supply of machined components (made from castings or complicated fabrication) or on job work basis. We also do design, supply, and erection of building sheds on PEB concept.
5. At Profile Engineers, we are committed to quality, timely delivery and complete customer satisfaction. This is reflected from the fact that we are regularly getting repeated orders from reputed corporate houses. More than 25% of our sales are from exports. Our equipments have been exported to Turkey, UAE, Vietnam, Bangladesh, Zambia, China, Italy, Philippines, Tanzania, Uganda, Saudi Arabia, Kenya, Spain, Sudan, Malaysia, Thailand, USA, Germany, Russia and Nepal. We have supplied material under our client's strict inspection and also under third party inspection agencies like Lloyds Register, TUV, Bureau Veritas, SGS Ltd., Tata Projects Ltd, Germanischer Lloyd, National Federation of Cooperative Sugar Factories Ltd., M.N. Dastur & Co., ABS Industrial Verification (India), Quality Services & Solutions (QSS), Spark Consulting, Quest etc. All necessary testing facilities, like radiography, ultrasonic testing, physical & chemical and D.P. testing are available with us/our local vendors. Proper documentation is also being kept with us. Our material is mainly being supplied to OEM's like Isgec Heavy Engineering, Thermax, GE Power India Ltd., Metso Minerals India Ltd, Sandvik Asia Ltd., Enxio power cooling solutions, FLSmidth, L&T MHI Boilers, Thermax SPX Technologies, etc.
6. With three manufacturing units spread over 20800m² areas, a strong technically qualified team of engineers and experienced workforce; we are capable of delivering over 6000MT of fabricated material per year.
7. We deeply desire to be associated with your esteemed organization and have all the necessary qualified & experienced staff & infrastructure for your type of work. Kindly go through the following enclosures to get better idea of our capabilities.



Profile Engineers

Office/Unit-I : Plot No. C-115, Site-1, B.S. Road Industrial Area
GHAZIABAD - 201009 (INDIA)

Phone : 0120-4155664, 4139218 (M) 9810639564

E-mail : puneet@profileengineers.com
profileengineers@gmail.com

- a) Company Profile
 - b) Product Profile
 - c) Machine Shop Details
 - d) List of machines
 - e) List of electric tools/utilities/measuring instruments.
 - f) List of regular customers
8. We are expanding in a big way by increasing capacities in all the spheres, and are adding new machines and building up extra infrastructure.
 9. We can provide any kind of surface preparation i.e., sand/grit blasting, epoxy painting, polyurethane painting. The quality of our painting is the industry standard.
 10. We assure you that the valuable support and interest of all our esteemed customers are kept uppermost in our agenda and look forward to receive your valuable enquiries and purchase orders. In case any other information is required please feel free to contact us.

Thanking you,

Yours faithfully,

(Puneet Aggarwal) (CEO)
(Mech.)



Contents

a) COMPANY PROFILE	3
b) PRODUCT PROFILE	6
c) MACHINE SHOP DETAILS:	8
d) LIST OF MACHINES	9
e) LIST OF ELECTRIC TOOLS	10
f) UTILITIES	10
g) MEASURING INSTRUMENTS/TESTING EQUIPMENT	11
h) BLASTING AND PAINTING	12
i) REGULAR CUSTOMERS	13
j) PROJECTS EXECUTED FOR POLLUTION CONTROL	14
k) A LOOK AT OUR PROJECTS	15



a) COMPANY PROFILE

1	Details of company	
1.1	Name	PROFILE ENGINEERS
1.2	Address	
	Unit - 1	C-115, B.S. Road, Industrial Area, Ghaziabad, 201009 (U.P.)
	Unit -2	C-3, Sikandarabad Industrial Area, Sikandarabad, Distt. Bulandshahar, 203205 (U.P.)
	Unit- 3	A-9, Sikandarabad Industrial Area, Sikandarabad, Distt. Bulandshahar, 203205 (U.P.)
1.3	Type of Concern	Proprietary
1.4	Name of Proprietor	Mr. Puneet Aggarwal
1.5	Total number of employees	
	Administrative	2
	Technical	12
	Purchase	2
	Supervisor	10
	Operatives	140
1.6	Contact persons	
	Name	Mr. Puneet Aggarwal (9810639564) Mr. Pranav Aggarwal (9717764823)
	Telephone no.	(0120)–4139218, 4155664(O)
2	Financial Status	
	Year 2018-19	Rs. 346 million
	Year 2019-20	Rs. 212 million
	Year 2020-21	Rs. 214 million
2.1	Name and address of bankers	Kotak Mahindra Bank
2.2	Credit Limit	Rs. 275 Lacs.
2.3	Bank Guarantee Limit	Rs. 75 Lacs.
2.4	Medium Term Loan	Rs. 200 Lacs.
3	GST No.	09ABQPA7029J1ZD
3.1	Udyam Registration No.	UDYAM-UP-29-0017110, Small Enterprise
3.2	Import Export Code No.	502049057



Profile Engineers

Office/Unit-I : Plot No. C-115, Site-1, B.S. Road Industrial Area
 GHAZIABAD - 201009 (INDIA)
 Phone : 0120-4155664, 4139218 (M) 9810639564
 E-mail : puneet@profileengineers.com
 profileengineers@gmail.com

4 NAME, QUALIFICATION, DESIGNATION AND EXPERIENCE OF PRINCIPAL OFFICER		
4.1	CEO	Mr. Puneet Aggarwal
		B.E. (Mech) 32 years of experience in manufacture, marketing, project execution, fabrication, machining and industrial furnaces.
4.2	Head Unit-2	Mr. Pranav Aggarwal
		Masters in Engineering with Management (Mech.)
4.3	Assistant Manager	Mr. S.S. Rathi
		Diploma (Mech). 23 years of experience in fabrication & inspection of heavy machinery. NDT level 2 in UT, MPI and DP.
4.4	Engineer (Production)	Mr. Prashant Sharma
		B. Tech (Mech.) 8 years of experience in CNC programming and operation of CNC machines.
4.5	Engineer (Quality control)	Mr. Lokesh Kumar
		Diploma (Mech) 8 years of experience in fabrication & inspection of sugar machinery, boiler parts and furnaces.
4.6	Engineer (PPC)	Mr. Kulbushan Shishodia
		B.Tech. (mech.), 6 years of experience in production, planning & control.
4.7	Engineer (Sales)	Mr. Kamal
		B.Tech. (Mech.) 1 year of experience in production and sales of heavy steel fabrication.
4.8	Engineer (Quality control)	Mr. Ghazanfar Khan
		B.Tech. (Mech.) 2 year of experience in fabrication and inspection of fabricated structures and equipment. NDT level 2 in UT, MPI and DP.
4.9	Engineer (Production)	Mr. Gaurav Munde
		B.Tech. (Mech.) 1 year of experience in production.
4.10	Engineer (Quality control)	Mr. Sanjeev Kumar
		B. Tech (Mech.) 1 year experience in fabrication & inspection of sugar machinery, boiler parts & fabricated structures.
4.11	Supervisor	Mr. M.A. Khan
		31 years of experience in fabrication of equipment for material handling, sugar plants, cements plants, stone crushers.
4.12	Supervisor	Mr. Satvinder Singh Kalsi
		36 years of experience in machining of equipment for material handling, sugar plants, cement plants, stone crushers.



Profile Engineers

Office/Unit-I : Plot No. C-115, Site-1, B.S. Road Industrial Area
GHAZIABAD - 201009 (INDIA)

Phone : 0120-4155664, 4139218 (M) 9810639564

E-mail : puneet@profileengineers.com
profileengineers@gmail.com

5		Manufacturing			
5.1	Shop Space	Unit-1	Unit-2	Unit-3	Total
	Plot Area (m ²)	4782	5762	10256	20800
	Fabrication shop area (m ²)	2214	865	1450	4529
	Machine Shop Area (m ²)	215	1815	0	2030
	Open Area (m ²)	2136	1642	8776	12554
	Office Area (m ²)	172	130	15	317
	Store Area (m ²)	45	100	15	160
	Shed Gantry Height (m)	12	9	-	21
5.2	Power				
	Main Installed (kVA)	170	140	100	410
	Generator (kVA)	125	125	62.5	312.5
6.1	Inspection Procedures	All critical raw materials are checked by physical/chemical /ultrasonic testing. Material is purchased from approved vendors. Documentation checked prior to purchase. Periodic calibration of measuring instruments carried out. 100% stage and final inspection is being carried out by us and reports submitted to our clients for approval. Final approval of material is after client's inspection.			
6.2	Control Exercised Over Sub-Vendors	Raw Material is being supplied by us. Stage and final inspection being carried out by us.			



b) PRODUCT PROFILE

I. MACHINED COMPONENTS

- For Sugar, Cement, Machine Tools, Infrastructure, Turbines, Steel Plants, Boilers.

II. BOILERS

- Fabricated columns, beams, bracings, platforms, ducting, hoppers, (air heater, forced flow, ash, riddling), chutes, casing, buck stay, pressure part support, expansion joints, airfoil.
- Blow down tanks, condensate tanks, and boiler feed water tanks with rubber lining.
- Air heater tube plates, assembled APH.
- Grate bars, stoker drive (Hydraulic and Mechanical), stoker drive lubrication systems, special bearing housings for stoker drive (as per IS 210 Gr FG300)
- Dampers.
- Bagasse feeders, pneumatic spreader, coal spreader drives.
- Chimney.
- Sliding gates, silo, air vanes, bunker, wind box.
- Vortex finder, screw feeder

III. SUGAR PLANTS:

- Fabricated structures, equipment, molasses tanks etc.
- Cane kicker, cane leveller, cane cutter, fibrizer.
- Shafts, Plummer blocks, sprockets, gears, Donnelly chutes etc. for cane carrier, intermediate carriers and bagasse carrier.
- Mill drive Plummer blocks.
- Mills: Headstock, Hydraulic cap, Side cap, top and side Bearings, Trash Beam, Trash Plate, Scrapper Plate, Crown Pinion, Tail Bar, Mill Coupling, Geared Coupling, High Speed and Low Speed Coupling for Mill drive, Mill Lubricator.
- Shafts: Roller Shaft, Gear Shaft, Hopper Shaft, etc.
- Tube Plates: for Vacuum pan, Evaporator, Juice heater.
- Spur, Helical and Bevel Gears, re-conditioning of gear boxes.
- Chain Sprockets up to 9 inches pitch.
- Bagasse bailing press.
- Belt Conveyor and Screw Conveyor.
- Dynamic Balancing of Rotating equipment.
- Spares for Hydraulic Truck Tippler, power pack and hydraulic accumulators.



IV. FURNACES AND GALVANISING PLANTS:

- Fabrication for furnaces and galvanizing plants for wire drawing industry, such as patenting fumeless pickling, lead quenching furnace, zinc bath, Zinc tanks made out of DSQ plates.

V. MINERAL PROCESING:

- Chassis for mobile crushing plants.
- Station structure i.e., receiving hopper, screen station, Jaw crusher, tunnel feeder station, cone crusher.
- Surge hopper, extended hopper.
- Centrifuge, spiral classifiers, lamella.
- Cyclone distributors, flotation cell.

VI. POLLUTION CONTROL:

- Fabrication of columns, casings, hoppers, Inlet and outlet nozzles, penthouse for ESP.
- Bag filters.
- Wet scrubbers

VII. FABRICATION

- Any kind of fabrication in mild steel, stainless steel, aluminium, high tensile steel (Sailma Hi350, Hi410), Alloy steels (SA 387), Boiler quality (SA516 Gr70), wear resistant Tiscral, Hardox.

VIII. SPECIALIZED PAINTING JOBS:

- We carry out special painting jobs involving strict third-party inspection, jobs for Suzion Energy, ISGEC Heavy Engineering Nara.

IX. STORAGE TANKS:

- Diesel storage tanks in boiler quality plates & MS.

X. COOLING TOWERS:

- Fabrication of "A" frame, wind wall, fan bridge, steam distribution duct, vane elbow, reducers, Y- piece, condensate tanks.

XI. INFRASTRUCTURE

- Design, fabrication, supply and erection of steel buildings.

c) MACHINE SHOP DETAILS:

1. **CNC Floor Boring Machine:** The floor type machine is a 7 axis CNC machine purchased from Doosan Babcock Ltd, England. This is a very well-maintained machine and was used to make turbine casings. The machine was under power and the contracts for dismantling was awarded by us to SKS engineering and machine services ltd. M/s SKS were responsible for the overhaul and maintenance during its working with Doosan Babcock.

1.1	Make	Schiess Froriep
1.2	Model	OFBW 180
1.3	Type	7 axis floor type boring and milling machine with CNC milling head.
1.4	Year of manufacture	1981
1.5	Year of overhaul	2001
1.6	CNC controller	FAGOR 8055
1.7	Spindle diameter	180mm
1.8	Ram size	600x400mm
1.9	Max traverse of column 'X'	13000mm
1.10	Vertical travel 'Y'	4500mm
1.11	Spindle travel 'Z'	990mm
1.12	Ram travel 'W'	1400mm
1.13	Table travel 'V'	2000mm
1.14	Floor plate area	12000x5000mm
1.15	Rotary table size	3200x3200mm, capacity 80 tons and 2000 x 2000 (Skoda E20)
1.16	Facing head	600mm dia, D'Andrea make
1.17	Milling head	2 no's universal milling heads

2. VTL: Rafamat Model 320 A

2.1	Table Diameter	3200
2.2	Swing Diameter	3500
2.3	Turning Height	1750

3. CNC Plano Miller

3.1	Make	Stirk (England)
3.2	Dimensions (Job)	5000 (L) x 2500 (W) x 2000 (H)

4. Radial Drilling Machine

4.1	Csepel	100m x 3000
4.2	Soraluce	100m x 3000
4.3	HMT RM 65	2Nos

5. Floor Boring Machine

5.1	Make	Skoda
5.2	Spindle diameter	200mm
5.3	Max traverse of column 'X'	4000mm
5.4	Vertical Travel	3150mm
5.5	Spindle Travel	
5.6	Rotatory Table Size	2000 x 2000 (Skoda E20)



6. Radial drilling machine

6.1	Make	MAS
6.2	Model number	VRP84A
6.3	Type	Travelling column
6.4	Column travel	7000 mm
6.5	Maximum drilling capacity	80 mm
6.6	Arm length	4800 mm
6.7	Floor plate size	3000 x 2500

7. Plate rolling machine 50 mm x 3000 mm

d) LIST OF MACHINES

SNo	SPECIFICATION	MAKE	YEAR	M/C Capacity	QTY
MACHINE SHOP					
1.	Lathe 24' bed	Nav Ashu	1999	1500x5900mm	1
2.	Lathe 8' bed	WMW	1993	180/1800	1
3.	Lathe 8' bed	Poland	2011	500/1500	1
4.	Radial drilling machine	HMT RM65	2006	65x2300 mm	2
5.	Radial drilling machine	Chapel	2002	100 x 3000 mm	1
6.	Radial drilling machine	Soraluce	2006	100 x 3000 mm	1
7.	Radial drilling machine	HMT RM61	2019	50mm	1
8.	Radial drilling machine	Russia	2019	50mm	1
9.	Radial drilling machine	Mazak	2009	100 x 2775 mm	1
10.	Radial drilling machine	National	1997	32mm	1
11.	Radial drilling machine	National	2010	40mm	2
12.	Drill point grinder	Dorner	1995	75mm	1
13.	Band Saw	Niraj	2013	229mm	1
FABRICATION SHOP					
1	Air Plasma m/c	EPE	2004	45mmSS	1
2	Air Plasma m/c	Ador	2009	20mmSS	2
3	Air Plasma m/c	Electra	2021	35 mm clean cut	1
4	Beam fabrication line	Zhouziang	2018	3000 depth	1
5	CNC plasma/gas cutting	Zhouziang	2018	3000 x15000	1
6	Hydraulic Iron Worker	Kingsland	2013	125T	1
7	Hydraulic press	Profile	1999	150T/inch2	1
8	Hydraulic shearing	Cincinnati	1990	13mm x	1
9	Inverter MIG, CC/CV	Migatronic	2014	400 Amps	14
10	MIG welding machine	Ador/Memco	2004-09	400 Amps	15
11	Pillar type drilling	Alfa	1997	50mm	1
12	Pillar type drilling	Seiko	2003	32mm	2
13	Pipe Bending machine	Profile	2002	15-150NB	1
14	Pipe Bending machine	Jeet	2006	50 NB	1
15	Pipe cutting machine	Breeze	2003	115mm	2
16	Plate Bending machine	Sertom	2010	2500x36mm	1
17	Plate Bending machine	Profile	2002	2500x32mm	1
18	Plate Bending machine	Profile	1995	1500x10mm	2
19	Press Brake	Bronx	2000	400 tonnes x 5200	1



SNo	SPECIFICATION	MAKE	YEAR	M/C Capacity	QTY
20	Pug Machine	Essab	1998	150 mm	18
21	SAW Welding	Mogora	2014	1200 Amps	1
22	SAW Welding	Kaiyuan	2017	1200 Amps	1
23	TIG welding machine	Migatronic	2017	200Amps	1
24	TIG welding machine	Electra	2021	200Amps	1
25	Tube expander	Perfect Tools	2012	100 mm OD	2
26	Welding inverter	D&H/Migatronic	2009-14	400 Amps	18
27	Welding inverter	Electra	2019	400 Amps	2
28	Welding rectifier	Memco	2001-09	400 Amps	20
29	Welding rectifier	D&H/Migatronic	2003	400 Amps	13
30	Welding rotator	Mogra	2021	15 tonnes	1 set

e) LIST OF ELECTRIC TOOLS

S. No.	SPECIFICATION	MAKE	YEAR	M/C Capacity	QTY.
1	Angle grinder 5"	Makita	2018-2021	125mm	23
2	Angle grinder 9"	Makita	2018-2021	230mm	46
3	Angle grinder AG9	Dewalt	2021	230mm	2
4	Die Grinder	KPT/Makita	2011-2014	25mm	4
5	Flexible shaft grinder	Trident	2018	125mm	1
6	Hand drill machine	Makita	20018-21	10mm	4
7	Magnet drilling machine	Ralliwolf/KPT	2014-2019	32mm	16
8	Magnetic Broach Drilling	Broach	2018-2021	50mm	17
9	Orbital sander	Hitachi	2006		1
10	Pistol drill machine	KPT	2003	10mm	2
11	Straight grinder	KPT	1999	100mm	2

f) UTILITIES

S. No.	SPECIFICATION	MAKE	YEAR	M/C Capacity	QTY.
1	Angle Plates	Skoda	2021	2500 x 760mm	1 pair
2	Chain pulley block				
	5 Tonnes	Globe	1997		1
	3 Tonnes	JP/China	2007		1
	2 Tonnes	JP/China	2001		1
	1 Tonne	Indef	1998		1
3	D.G. set 25 KVA	Ankur	2007		1
4	D.G.set 125 KVA	Cummins	2002		2
5	D.G.set 62.5KVA	Cummins	2006		1
6	Electrode drying oven	Advani/Arcon	2003-2014	25kg	3
7	Electrode oven (portable)	Arcon	2006-2012	5kg	12
8	EOT crane 20 tonnes	Own make	2006		1
9	EOT crane 25/5 tonnes	Own make	2013		1

S. No.	SPECIFICATION	MAKE	YEAR	M/C Capacity	QTY.
10	EOT crane 40 tonnes	Safex	2021		1
11	EOT crane 7.5 T	Own make	2013		2
12	Hydra Crane	Escorts	2008-2012		2
13	Hydra Crane	JCB	2014		1
14	Hydraulic jack (250 Kg/cm-2)	Hycon	2003		1
15	Hydraulic test pump	Hycon	2003		1
16	Jam screw	Own	1997		5

g) MEASURING INSTRUMENTS/TESTING EQUIPMENT

S. No.	INSTRUMENT	LEAST COUNT	CAPACITY	MAKE	YEAR /MANU.	QTY
1	Angle protractor			Mitutoyo	2019	1
2	Bore Gauge	0.001mm	18-35mm	Mitutoyo	2009	1
3	Bore Gauge	0.001mm	18-35mm	Mitutoyo	2019	1
4	Bore Gauge	0.001mm	35-60mm	Mitutoyo	2001	1
5	Bore Gauge	0.001mm	250-400mm	Mitutoyo	2019	1
6	Dial gauge	0.01mm	0-10mm	Mitutoyo	1998	1
7	Dial Gauge	0.01mm	200mm	Sheffield	1998	1
8	Dial gauge	0.01mm	0-10mm	Mitutoyo	2019	2
9	Dial Indicator	0.01mm	0-10mm	Mitutoyo	2019	1
10	Inside micrometer	0.01mm	50-500mm	Mitutoyo	1997	2
11	Inside micrometer	0.01mm	50-1500mm	Mitutoyo	2019	1
12	Inside micrometer	0.01mm	1000-6000mm	Mitutoyo	2019	1
13	Inside micrometer	0.01mm	50mm	Mitutoyo	2019	1
15	Micrometer pipe	0.01mm	0-25mm	Precise	2019	1
16	MPI machine			EECI Flux	2015	1
14	Outside micrometer	0.01mm	400-500	Mitutoyo	2019	1
17	Outside micrometer	0.01mm	0-25mm	Precise	2014	1
18	Outside micrometer	0.01mm	0-150mm	Mitutoyo	1997	1
19	Outside micrometer	0.01mm	150-300mm	Mitutoyo	1999	1
20	Outside micrometer	0.01mm	300-400mm	Mitutoyo	2001	1
21	Outside micrometer	0.01mm	500-600mm	Mitutoyo	2019	1
22	Outside micrometer	0.01mm	600-700mm	Mitutoyo	2019	1
23	Poldi Hardness Tester			Blue steel	2019	1
24	Radius gauge		15-25mm	German	2001	2
25	Square level		200 x 200	Insize	2019	1
26	Square Level	0.01mm	200 x 200	RSK/Insize	2019	2
27	Straight Edge	50Micron	6000mm	Luthra	2019	1
28	Surface plate	4.37 Micron	1000 x 630	Bagson	2004	2
29	Tachometer				2019	1
30	Thread ring/Plug gauge		M24 to 110	Graphica	2014	9



S. No.	INSTRUMENT	LEAST COUNT	CAPACITY	MAKE	YEAR /MANU.	QTY
31	Ultrasonic flaw detector			Modsonic	2021	1
32	Vernier Calipers	0.02mm	200mm	555	1997	2
33	Vernier Calipers	0.02mm	300mm	Mitutoyo	2001	2
34	Vernier Calipers	0.02mm	300mm	Mitutoyo	2019	1
35	Vernier Calipers	0.02mm	600mm	China	2001	1
36	Vernier Calipers	0.02mm	600mm	Mitutoyo	2019	1
37	Vernier Calipers	0.02mm	1000mm	Mitutoyo	2019	1
38	Vernier Calipers	0.02	2000mm	Mitutoyo	2019	1
39	Vernier Depth Gauge	0.02mm	300mm	Mitutoyo	2019	1
40	Vernier Height Gauge	0.02mm	1000mm	China	2019	1
41	Welding Fillet Gauge		35mm	Kristeel	2012	2
42	Welding Fillet gauge		50 mm	Precise	2003-13	10

h) BLASTING AND PAINTING

SNo	INSTRUMENT	Least Count	CAPACITY	MAKE	YEAR/MANU.	QTY
1	Airless Paint Pump		Up to 55:1	VR coating	2014	3
2	Compressor for blasting	-----	300cfm/7 bar	Atlas Copco	2005	1
3	Compressor for blasting	-----	300cfm/8.5 bar	Atlas Copco	2011-13	3
4	Compressor for painting	-----		Ingersoll-rand	2001	1
5	Compressor for painting	-----		Pilot	2007-10	4
6	Compressor for painting	-----	35 CFM/8 bar	Emtex	2014	1
7	Dew point meter	1°C		Mannix	2006	2
8	Digital elecometer	1 Micron	0-2000	Yuyutsee	2005-2014	3
9	Hopper for blasting		900 kg.	Blast line	2013	4
10	Multi stem thermometer	1°C	30-150°C	Mextech	2006	2
11	Paint Agitator		-	Makita	2014	3
12	Paint thickness tester	-----		BSE	2003	1
13	Pressure feed pot		15 L	Blasting	2014	3
14	Profile Comparator	-----		GAR, USA	2005	1
15	Profile depth gauge	.01mm	0-10mm	Mitutoyo	2010	1
16	Surface roughness comparator			Rubert & Co.	2013	1
17	Temp. & Humidity meter			Kohseimitsu	2013	1
18	Wet film thickness tester	25 Micron	25-2032 m	Precise	2010	2



i) REGULAR CUSTOMERS

1.	ISGEC Heavy Engineering Ltd.
2.	Thermax Limited (Boiler & Heater Group)
3.	L&T MHI Boilers (P) Ltd.
4.	F L Smidth Pvt. Ltd.
5.	Doosan Power Systems India Pvt Ltd.
6.	Thermax Cooling Solutions Ltd.
7.	GE Power India Ltd.
8.	Fives Cail-KCP Limited.
9.	Enexio Power Cooling Solutions (India) Pvt. Ltd.
10.	Metso (India) Pvt. Ltd.
11.	Sandvik Asia Ltd.
13.	Clyde Bergemann India Pvt. Ltd.
14.	Multitex Filtration Engineers Ltd.
15.	Thermax Limited (Enviro Division)
16.	ISGEC Heavy Engineering, Muzzaffarnagar (Casting Division)
17.	Vidyut Furnaces
18.	Hamon Shriram Cottrell Pvt. Ltd.
19.	Wedag India Pvt. Ltd.
20.	Saraswati Sugar Mills
21.	Loesche India (P) Ltd.
22.	RSWM Ltd.
23.	Sudhir Genset Ltd.
24.	Samsung Electronics Ltd.
25.	Uttam Sucrotech International Pvt. Ltd.
26.	Bajaj Energy (P) Ltd.
28.	The Mysore Sugar Company Ltd.
29.	Rawalgaon Sugar Farm Ltd.



j) PROJECTS EXECUTED FOR POLLUTION CONTROL

SNo.	EPC Company	Project
1.	Thermax Ltd.	JCT Industries
		Khyber Industries Pvt. Ltd.
		Shriram Cement Works
		Shriram Investment Ltd.
		Kalindi Power & Steel Ltd.
		Cement Manufacturing Comp. Ltd.
		Aggarwal Sponge & Energy Pvt. Ltd.
		Abhishek Sales Corp.
		Gillanders Arbuthnot & Co. Ltd.
2.	Clyde Bergemann India Pvt. Ltd.	Thermax Ltd.
		Radikal Overseas Ltd.
		Best Foods Ltd.
		Shri DattaSahkariSakharKarkhana
		Veesons Energy Systems (P) Ltd.
3.	FL Smidth Pvt. Ltd.	Essar Constructions Ltd.

k) A LOOK AT OUR PROJECTS



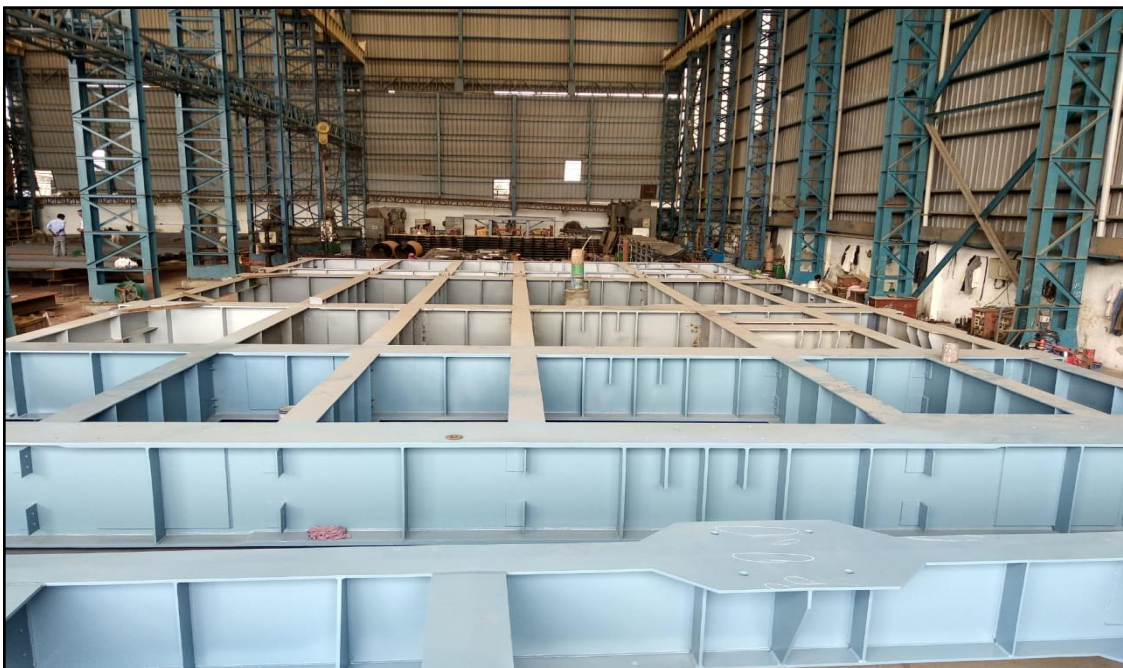
ALSTOM INSTRUMENT RACK FOR KUWAIT



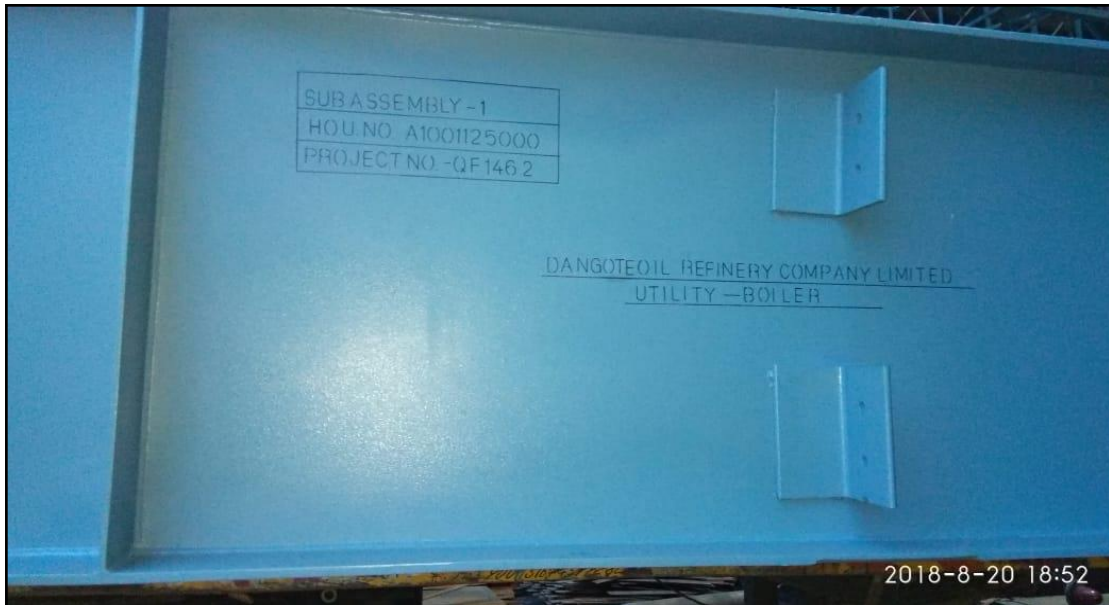
ASSEMBLED APH RELIANCE



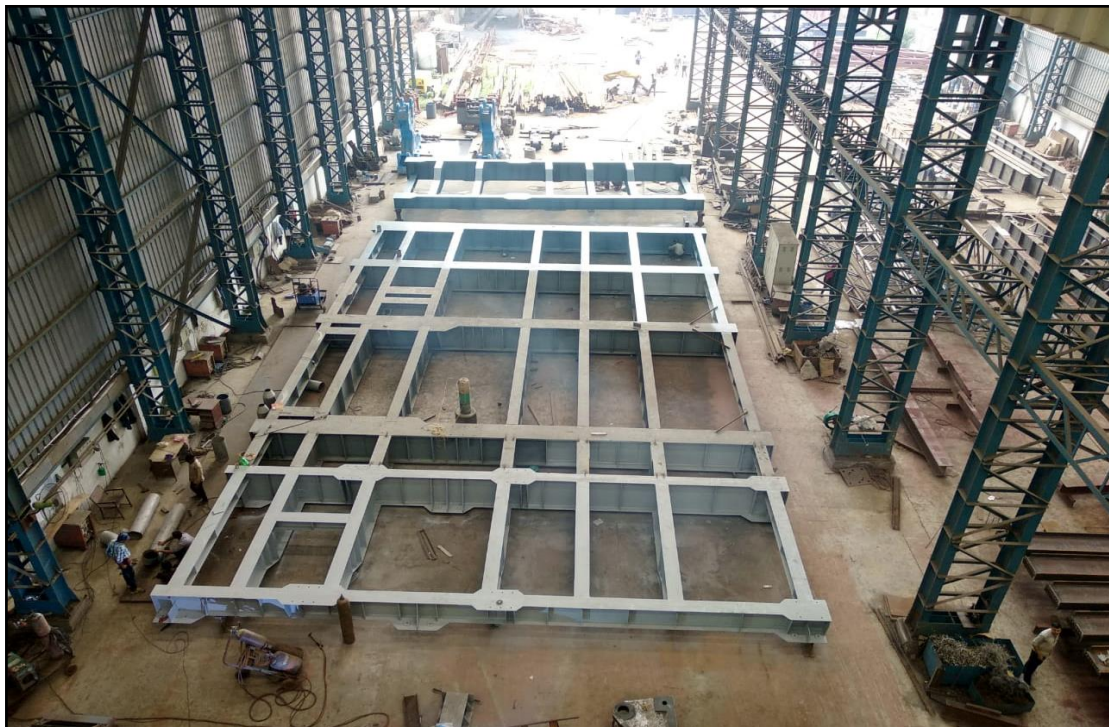
ASSEMBLED APH RELIANCE



BASE FRAME DANGOTE



BASE FRAME DANGOTE



BASE FRAME DANGOTE



BOLTED STR CAIRN ENERGY



BUCKSTAY RELIANCE THERMAX



BUCKSTAY RELIANCE THERMAX



COLUMN CHADHA SUGAR



Profile Engineers

Office/Unit-I : Plot No. C-115, Site-1, B.S. Road Industrial Area
GHAZIABAD - 201009 (INDIA)
Phone : 0120-4155664, 4139218 (M) 9810639564
E-mail : puneet@profileengineers.com
profileengineers@gmail.com



COLUMN CHADHA SUGAR



COLUMN IOCL THERMAX



DUCT L & T



COLUMN IOCL THERMAX

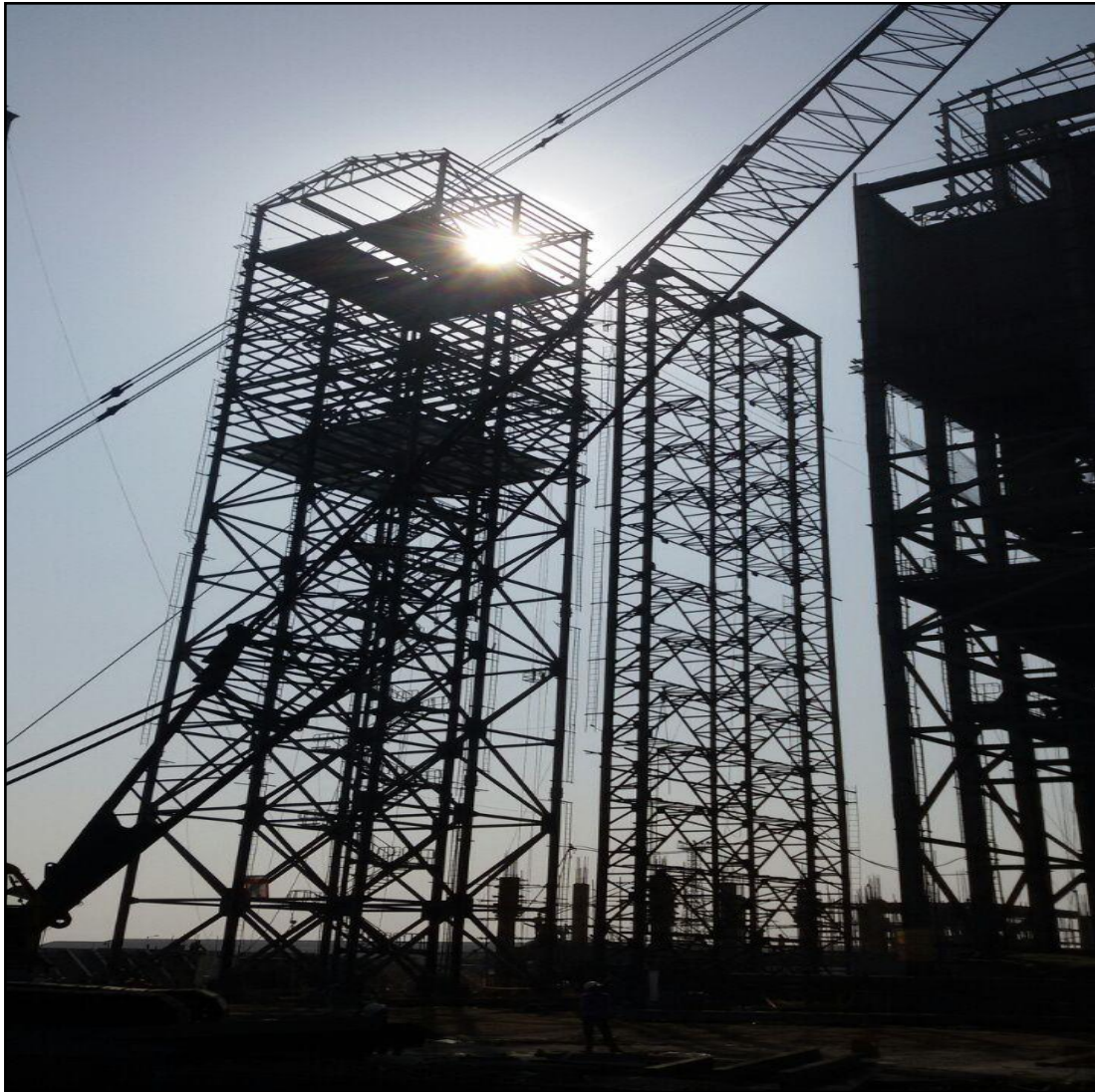


Profile Engineers

Office/Unit-I : Plot No. C-115, Site-1, B.S. Road Industrial Area
GHAZIABAD - 201009 (INDIA)

Phone : 0120-4155664, 4139218 (M) 9810639564

E-mail : puneet@profileengineers.com
profileengineers@gmail.com



CONVEYOR STRUCTURE (NIRMA) ISGEC



GRAVIMETRIC FEEDER FL SMIDTH



HOPPER L&T



Profile Engineers

Office/Unit-I : Plot No. C-115, Site-1, B.S. Road Industrial Area
GHAZIABAD - 201009 (INDIA)
Phone : 0120-4155664, 4139218 (M) 9810639564
E-mail : puneet@profileengineers.com
profileengineers@gmail.com



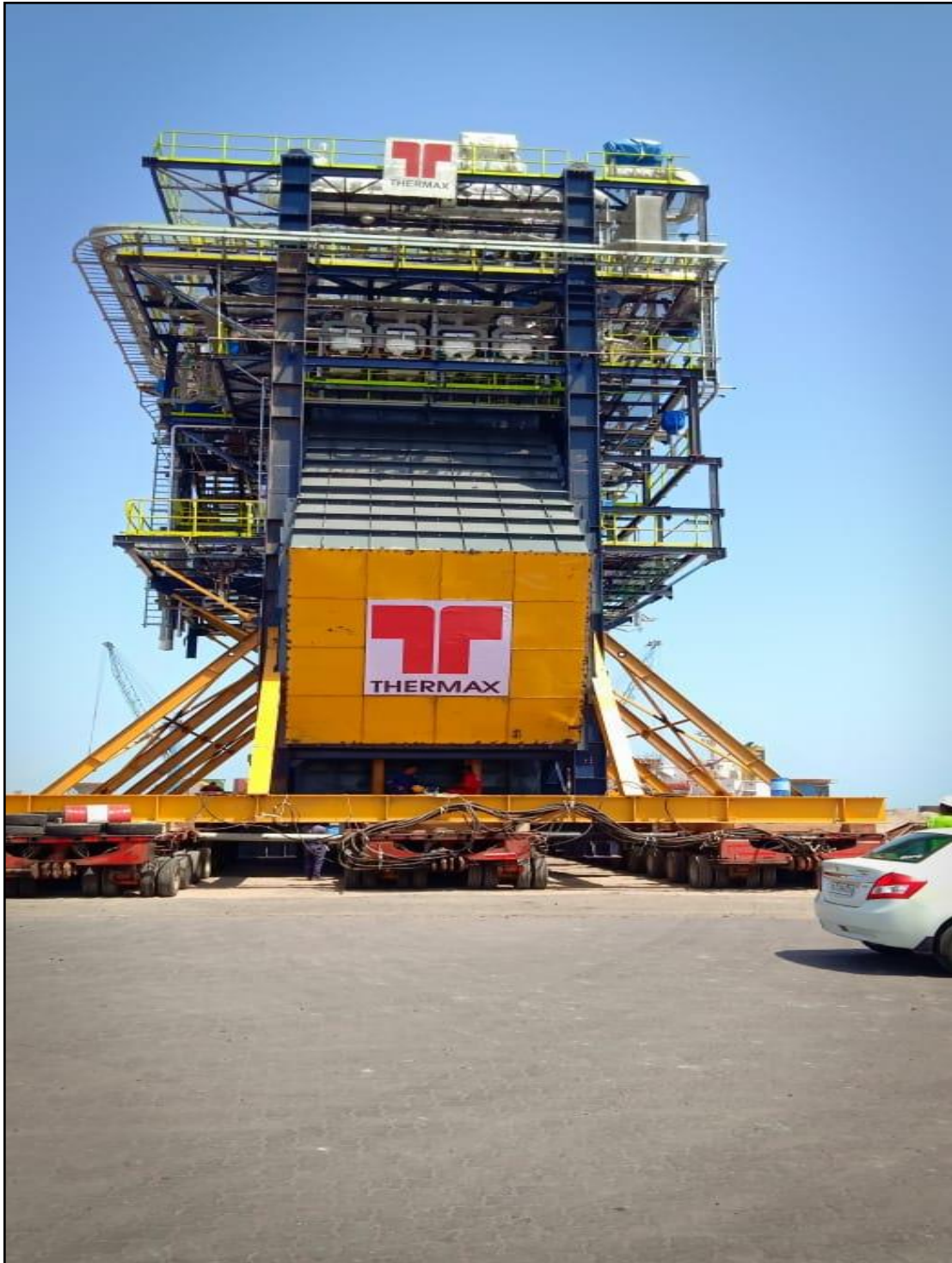


Profile Engineers

Office/Unit-I : Plot No. C-115, Site-1, B.S. Road Industrial Area
GHAZIABAD - 201009 (INDIA)

Phone : 0120-4155664, 4139218 (M) 9810639564

E-mail : puneet@profileengineers.com
profileengineers@gmail.com





Profile Engineers

Office/Unit-I : Plot No. C-115, Site-1, B.S. Road Industrial Area
GHAZIABAD - 201009 (INDIA)

Phone : 0120-4155664, 4139218 (M) 9810639564

E-mail : puneet@profileengineers.com
profileengineers@gmail.com





L & T JAYPEE DUCT



L & T JAYPEE ELBOW DUCT



SA HEADER MADHUCON ISGEC



STACK PL0511 GURU GOBIND SINGH



STACK GURU GOBIND SINGH REFINERY, BHATINDA



STACK CAIRN REFINERY, BARMER



Profile Engineers

Office/Unit-I : Plot No. C-115, Site-1, B.S. Road Industrial Area
GHAZIABAD - 201009 (INDIA)

Phone : 0120-4155664, 4139218 (M) 9810639564

E-mail : puneet@profileengineers.com
profileengineers@gmail.com



STAR COLUMN 55 Mtr LONG (NIRMA) ISGEC



Profile Engineers

Office/Unit-I : Plot No. C-115, Site-1, B.S. Road Industrial Area
GHAZIABAD - 201009 (INDIA)

Phone : 0120-4155664, 4139218 (M) 9810639564

E-mail : puneet@profileengineers.com
profileengineers@gmail.com



STR For SILO SSM ISGEC